



Wilder

COMMUNITIES



Surrey
Wildlife Trust

Together for nature

Surrey Wildlife Trust is dedicated to increasing the diversity and abundance of native wildlife across the county.

Across the Trust we're collaborating with community groups, landowners, businesses, public bodies, individuals and schools to help achieve the global mission of connecting and protecting at least 30% of land for nature's recovery by 2030.

WILDER COMMUNITIES

Our Wilder Communities Network is a key part of our nature recovery efforts in Surrey, helping community groups across the county improve local green spaces for wildlife.

As we move into the next phase of the project, Wilder Communities will strive to support community groups in Guildford, Bramley, Shalford, Wonersh, Worplesdon, Hambledon, Farnham, Haslemere, Godalming, Dorking, Redhill and Reigate to restore, connect and protect local green spaces for wildlife.

EVERY NEIGHBOURHOOD CAN BE A HOME FOR WILDLIFE. LET'S ACHIEVE THAT TOGETHER.

Whether you're a local group managing an area of land, a 'Friends of' group, parish council, community allotment, faith group, local interest group or gardening club - the support of your community is vital in connecting Surrey's nature.



Key locations



Surrey hosts a wide-range of wildlife-rich habitats, but these habitats and the species that depend on them are facing significant threats, mirroring a broader global trend. In Surrey alone, a third of species are either lost or in decline.

Wildlife's ability to move across the landscape is essential and, sadly, many species from frogs to Hedgehogs are becoming ecologically isolated in small, fragmented areas.

LANDSCAPE RECOVERY AREAS

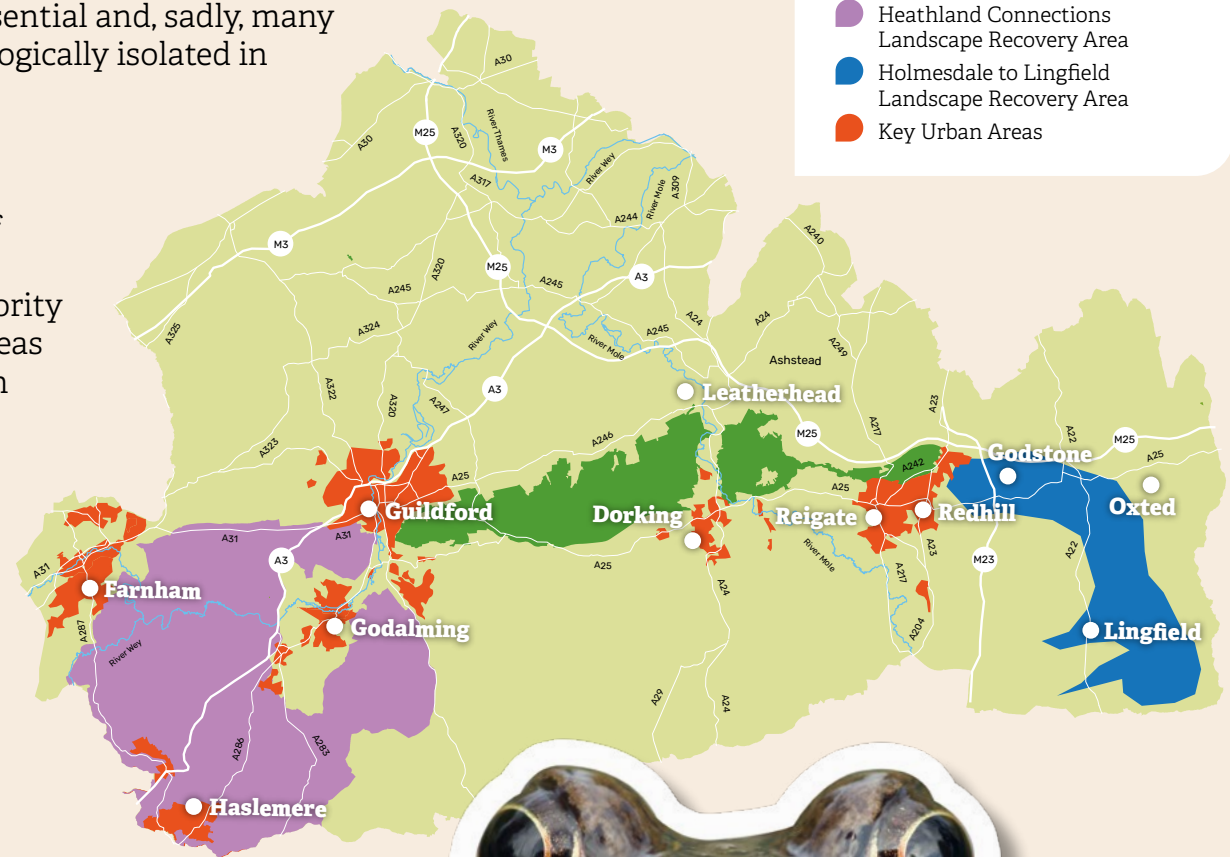
To enhance connectivity across Surrey, key areas of land have been identified where improved habitat management will restore connectivity between priority habitats and species. These Landscape Recovery Areas (LRAs) have been chosen to maximise our impact in connecting Surrey's nature.

The project locations sit within or beside three key LRAs. With the help of communities within these locations, we can expand and improve the usefulness of our green spaces by connecting smaller pockets of land together to create corridors through which wildlife can move freely across the county.

The ecological value of our neighbourhoods can often be overlooked, but every street, park, garden, stream and green space has the potential to help wildlife. These locations are key in linking up the Landscape Recovery Areas and creating a better-connected county from east to west.

LOCATION KEY

-  North Downs Landscape Recovery Area
-  Heathland Connections Landscape Recovery Area
-  Holmesdale to Lingfield Landscape Recovery Area
-  Key Urban Areas



How we can help

The support we offer is tailored to your community group's ecological aims. For example, we can provide:

- A network of like-minded communities who are passionate about nature's recovery
- Skills training sessions which improve knowledge of nature restoration and urban greening
- Bespoke site visits and tailored ecological advice from our experts
- Support with wildlife recording and citizen science, including through specialist equipment loans
- Support in leading your own practical activities
- Help in identifying funding opportunities and developing your fundraising skills
- Help in celebrating and sharing community stories and successes
- Tailored talks to your local group, through either our Communities Team, or the SWT Ambassadors Programme

GET IN TOUCH

communities@surreywt.org.uk
07968 832514

GET INVOLVED

We'd like to invite you to be part of this transformative project. You could join the movement of communities across the county who are stepping up as local wildlife advocates. Your unique local knowledge and expertise are invaluable, and your input can help to ensure that the project meets the needs and preferences of the local community.

We would welcome the opportunity to learn more about your group and discuss how we can work together to create a better-connected Surrey.





Surrey
Wildlife Trust



GET IN TOUCH

communities@surreywt.org.uk

07968 832514

Registered Charity No. 208123

Surrey Wildlife Trust is a company limited by guarantee, registered in England no. 00645176.
VAT number GB 791 3799 78. Registered office School Lane, Pirbright, Surrey, GU24 0JN

Cover image: Paul Harris/2020VISION

