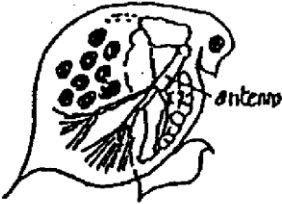
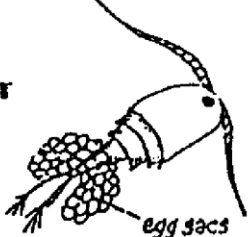

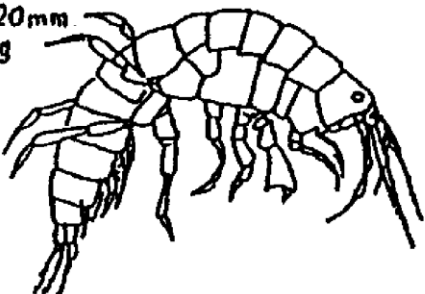
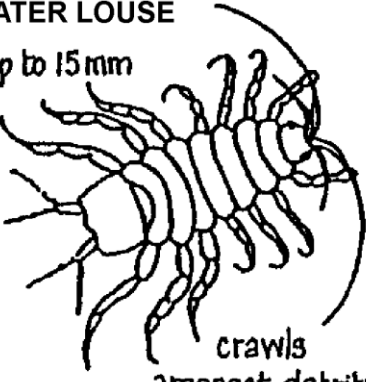
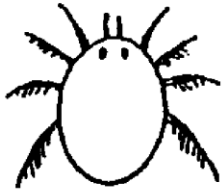


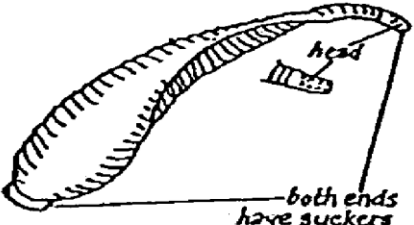
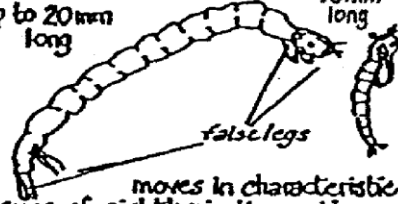
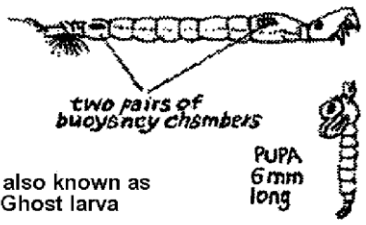



# COMMON POND ANIMALS






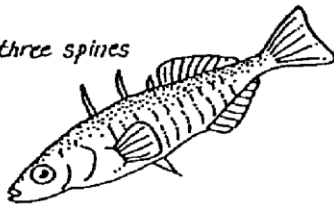
## More than 6 legs

<p><b>WATER FLEAS</b></p> <p>Daphnia 2-3 mm long ♀</p>  <p>antennae</p>	<p>Cyclops 1-2 mm long ♂</p>  <p>egg sacs</p>	<p>Ostracod 2-3 mm long</p> 
<p><b>FRESHWATER SHRIMP</b></p> <p>3-20 mm long</p>  <p>Swims on side - Gammarus swims upright - Crangonyx</p>	<p><b>WATER LOUSE</b></p> <p>up to 15 mm</p>  <p>crawls amongst detritus</p>	<p><b>WATER MITE</b></p> <p>2-4 mm long *</p>  <p>grey, black or red</p>

## No legs

<p><b>LEECH</b></p> <p>10 mm long</p>  <p>head</p> <p>both ends have suckers</p>	<p><b>MIDGE LARVA</b></p> <p>up to 20 mm long</p>  <p>PUPA 15 mm long</p> <p>false legs</p> <p>moves in characteristic 'figure-of-eight' wriggling motion</p> <p>bright red forms are called bloodworms</p>	<p><b>PHANTOM MIDGE LARVA</b></p> <p>12-15 mm long</p>  <p>two pairs of buoyancy chambers</p> <p>also known as Ghost larva</p> <p>PUPA 6 mm long</p>
<p><b>FLATWORM</b></p> <p>12-20 mm long</p>  <p>found on leaves, logs, etc.</p>	<p><b>WANDERING SNAIL</b></p> <p>usually 15-20 mm</p> 	<p><b>PEA MUSSEL</b></p> <p>up to 10 mm diameter</p>  <p>breathing siphons</p> <p>root</p>

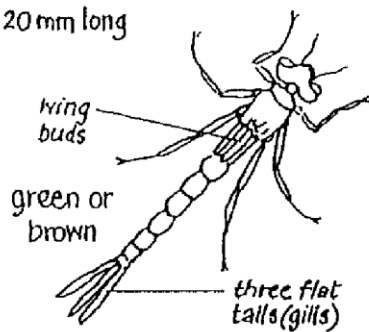
## Vertebrates

<p><b>FROG &amp; TOAD TADPOLES</b></p> <p>EARLY</p>  <p>LATER</p>  <p>frog tadpoles are mottled toad tadpoles are black</p>	<p><b>NEWT TADPOLE</b></p> <p>up to 4 cm long</p> 	<p><b>STICKLEBACK</b></p> <p>three spines</p> 
---	---	---

# 6 Legs (Insects)

## DAMSELFLY NYMPH

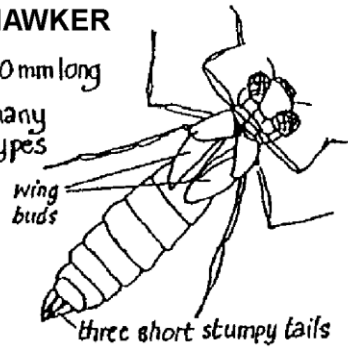
20 mm long



## DRAGONFLY NYMPH HAWKER

40 mm long

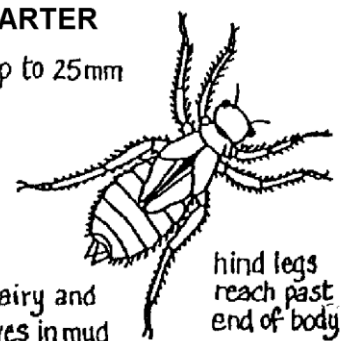
many types



## DRAGONFLY NYMPH DARTER

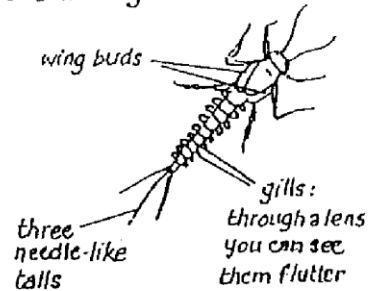
up to 25 mm

hairy and lives in mud



## MAYFLY NYMPH

5-9 mm long

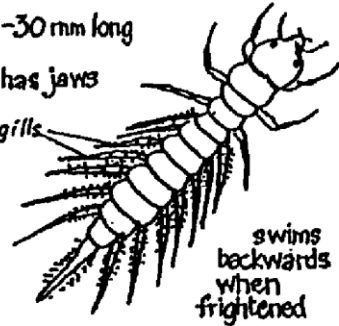


## ALDERFLY NYMPH

15-30 mm long

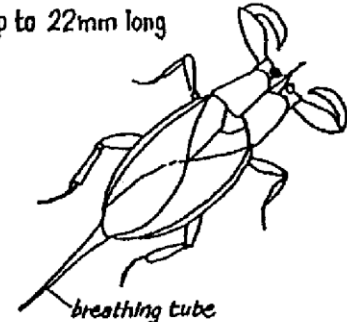
has jaws

gills



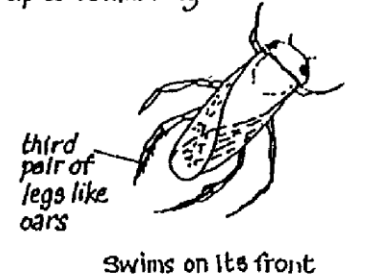
## WATER SCORPION

up to 22 mm long



## LESSER WATER BOATMAN

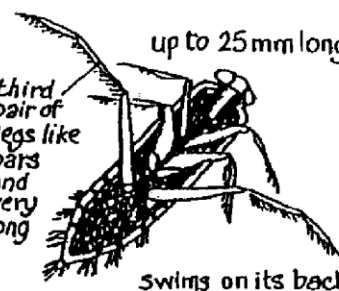
up to 15 mm long



## GREATER WATER BOATMAN

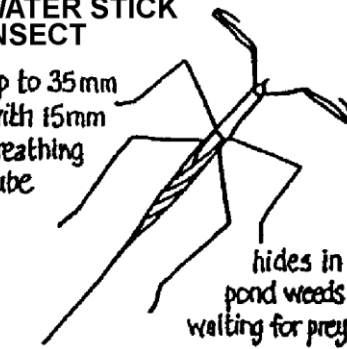
up to 25 mm long

third pair of legs like oars and very long



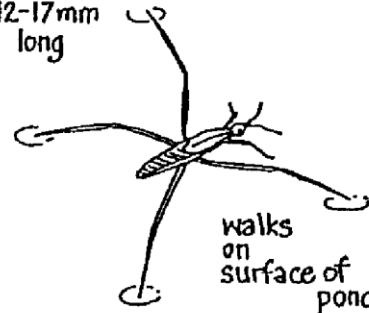
## WATER STICK INSECT

up to 35 mm with 15 mm breathing tube



## POND SKATER

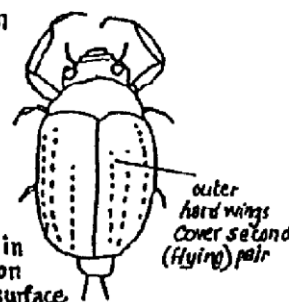
12-17 mm long



## WHIRLIGIG BEETLE

5-7 mm long

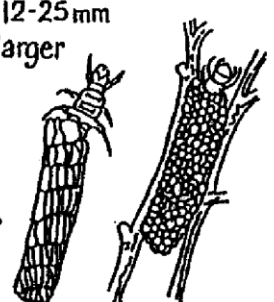
swims in circles on water surface.



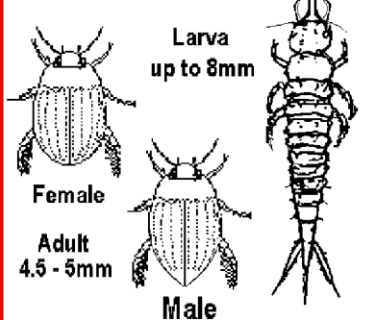
## CADDISFLY LARVA

larvae 12-25 mm cases larger

some species are caseless

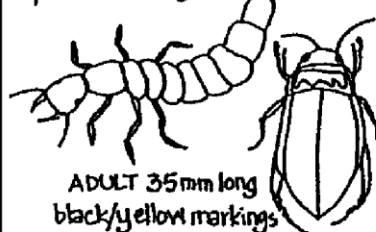


## HYPHYDRUS BEETLE



## GREAT DIVING BEETLE

LARVA up to 60 mm long



## SCREECH BEETLE

8-12 mm emits loud squeak when handled

