

# A Guide to Forest School Training

Course Information 2021/22





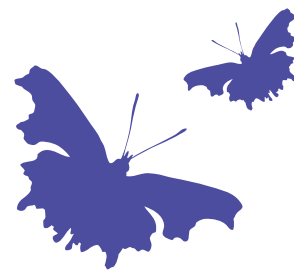
## What is Forest School?

**Forest School is a unique outdoor education programme run by qualified leaders. It gives children and young people the chance to explore, learn and discover at their own pace, developing their confidence and self-esteem in a safe and supportive space.**

Forest School is different from most other forms of 'environmental education' in that it involves regular sessions in the same woods and the activities are mainly determined by the children and are predominately play based.

The skillful Forest School leader will use the children's own interests to extend their knowledge and skills, thereby increasing the next generation's appreciation and care of the natural world.

The ethos is shared by thousands of trained practitioners across the UK and beyond. It's roots reach back to early years pioneers in outdoor learning and across the sea to Scandinavia.



## Why choose Surrey Wildlife Trust?

**Promoting the reconnection between people and their natural environment is at the heart of Surrey Wildlife Trust's Forest School ethos, and this is reflected in all areas of our courses.**

We recognise the vital importance of promoting an understanding of the natural world and see the Forest School training programme as an ideal medium for delivery.

As the only local charity that is concerned solely with the conservation of all forms of wildlife, we have expertise in biodiversity protection, botanical surveys and habitat management plans. Being a local training provider, we are often able to support new leaders on a personal level throughout their training and in the establishment of their own Forest Schools.

We offer additional support in terms of free resources, regular mentoring sessions for students and onsite visits & observations.

Our trainers are experienced providers of environmental education, and have been delivering Forest School programmes to children in Surrey from schools, nurseries, youth and community groups for many years.

We are active members of the Forest School Association (FSA) and the local Surrey group.

The Awarding body for our training courses is Open College Network West Midlands.

In addition to Level 2 & 3 courses, we provide a comprehensive CPD programme to support Forest School practitioners, which covers everything from First Aid to Tree Identification.



It covered all areas that were appropriate and relevant.  
It had the right amount of practical and theory,  
considering all areas of learning.

Forest School Training Level 3 Student



# Which level of training should I choose?

There are different levels of training in Forest School and we provide the following courses:

Level 2	Course description	Price
Level 2 is designed to qualify the learner to become a Forest School Assistant, enabling them to take a proactive role in helping a Forest School Leader plan and deliver a Forest School programme and supporting the learners.	<b>4 day training course covering the following units:</b> <ul style="list-style-type: none"> <li>Planning for and running your forest school</li> <li>Risk assessment, background to forest schools.</li> <li>Practical skills and woodland management including fire lighting, tool use, games, identification and use of woodland resources.</li> <li>Assistance with completing your portfolio and marking.</li> </ul> <b>Awarding Body:</b> Open College Network West Midlands	£490

Level 3 Top Up	Price
Our top up course is designed for those who already have a Level 2 qualification with Open College Network West Midlands and wish to gain the Level 3 certificate. This course is incorporated within our existing Level 3 qualification, but with less guided tuition and a reduced cost. Please contact us for further information or if you have a Level 2 qualification with another provider.	£500

Level 3	Course description	Price
Level 3 is designed to qualify the learner to become a Forest School Leader, able to set up and run a Forest School programme. Level 3 covers how to facilitate groups in a learner-centred way, and how to manage a Forest School site sustainably. It also covers the practical skills required of a Forest School practitioner.  You do not need to have a Level 2 in order to complete Level 3.	<b>5 day training course covering the following units:</b> <ul style="list-style-type: none"> <li>Planning for and running your forest school; policies and procedures, risk assessment, session planning.</li> <li>Theories of learning and development and background to forest schools.</li> <li>Practical skills and woodland management including fire lighting, tool use, games, identification and use of woodland resources.</li> <li>Mentoring sessions – a face to face opportunity to ask questions and receive advice on your portfolio work.</li> <li>Two skills days assessing and consolidating skills.</li> <li>Portfolio advice and assessment.</li> </ul> <b>Awarding Body:</b> Open College Network West Midlands	£950

**Not sure what to expect? Why not attend one of our taster mornings.**

See page 6 for details

## Taster sessions and further training events

We provide half or full day taster sessions for individuals and INSET training for schools to introduce the theory and practice of Forest Schools. We also offer follow up training and support, running sessions in schools and advice on improving your site. For further information please contact [outreach@surreywt.org.uk](mailto:outreach@surreywt.org.uk)

# Course requirements

## Level 2 Award for Forest School Assistants

**(Accredited by the Open College Network West Midlands)**

- Participants should be over 18 years old and have some experience of working with young people or adults, for example youth workers, teaching assistants or teachers.
- All participants must be DBS checked.
- Attend the four days of theory and practice.
- Be able to assist with the planning and delivery of three Forest School sessions.
- Complete a workbook of evidence.
- Course commitment approximately 60 hours.
- Option to attend a monthly mentoring session (these are not compulsory but highly recommended).

**The course should take participants six months to complete, although some have handed all coursework in after a few months. It can take several months for the work to be marked and for the Examination board to validate and send the certificate to us.**

## Level 3 Certificate for Forest School Leaders

**(Accredited by the Open College Network West Midlands)**

- The minimum age to start this qualification is 19 years old. Participants must have significant experience of working with young people or adults, for example youth workers, teaching assistants or teachers. The minimum age to practice as a Forest School Leader is 21 years old (this is a Forest School Association and Department of Education requirement).
- All participants must be DBS checked.
- When leading a Forest School you will need a First Aid qualification, this can be either First Aid at Work (3 days) or Outdoor First Aid (2 days). Due to the outdoor nature of the work, an Outdoor First Aid qualification is strongly recommended, especially if forest school sessions take place in remote locations. We run First Aid courses throughout the year as part of our CPD for forest school practitioners, please contact [outreach@surreywt.org.uk](mailto:outreach@surreywt.org.uk)
- Attend the initial five days of theory and practice.
- Able to set up and run six forest school sessions to a target client group within a woodland setting.
- We will arrange an on-site training visit to your setting during one of your sessions.
- Complete a portfolio of research and written tasks.
- Attend a further two skills assessment days – about four months into the Level 3 course, this will include cooking over a fire and shelter building. This is also a great opportunity to discuss any challenges, share tips and ask questions.
- Course commitment approximately 180 hours.
- Option to attend a monthly mentoring session (these are not compulsory but highly recommended).

**The course should take participants nine months to complete, although some have handed all the coursework in after a few months. It can take several months for the work to be marked and for the Examination board to validate and send the certificate to us.**

## Bookings and Admin:

**Victoria Pinder**

**Direct Tel: 01483 663300**

**Email: [outreach@surreywt.org.uk](mailto:outreach@surreywt.org.uk)**

**website: [surreywildlifetrust.org/forestschool](http://surreywildlifetrust.org/forestschool)**



## What I need for the course?

You will need a full set of outdoor waterproof clothing and a pair of suitable boots, the majority of the course is spent outside whatever the weather. Further items like a camera/phone is advisable to take pictures for your portfolio. You will be sent full joining instructions when you have booked a place.

You need to arrange a woodland site and a client group to deliver your 'Introduction to Forest School' programme (min 6 sessions); it is not vital to have this prepared before the course, but it will help give context to your learning if you can picture your woodland and know a bit about your learners. Do bear in mind that the Forest School Association guidelines for quality provision are that each session is at least 2 hours long.

## How do I book a place?

Please complete the booking form included in this guide and return to us with a deposit to secure your place on a course. We will then invoice you for the remaining balance a month before the course starts. Payment must be made before the start of the course. See our booking conditions included in this guide.

## Tailored courses

SWT can offer and has in the past provided tailored Forest School courses at an individual settings or schools if there are sufficient numbers of staff (six plus) wanting to attend. This is a great training opportunity as it enables you to have a course delivered that is specifically tailored to your site and the children or young people you work with. For further information and the cost contact [outreach@surreywt.org.uk](mailto:outreach@surreywt.org.uk)

## Adult courses booking conditions

### Safety and first aid

All training activities run by the Surrey Wildlife Trust are run with safety as a priority, and the Outdoor Learning Officer is First Aid trained. There will be safety instructions where necessary as part of the session, which we expect all participants to follow. Please inform the bookings administrator of any dietary requirements or medication taken. Please bring any medication needed and make the course leader aware of where it is.

## Clothing and Equipment

All participants should be adequately prepared for the outdoors. Clothing should be suitable for getting muddy/torn.

**Winter:** warm clothes and waterproofs.

**Summer:** hats, suncream and plenty of water should be brought; waterproofs if it looks like it may rain.

We recommend long trousers and long sleeved tops, even in the summer, to help prevent bites, scratches and ticks. Insect repellent may be applied if wished.

Footwear should be sturdy trainers or boots to reduce the likelihood of slips, trips and falls.

## Inclement weather

Our training will run unless the weather is so bad it would be dangerous to do so. Some of the sites we use have access to a building if necessary and have toilets available.

## Refreshments

The Forest School training lasts all day, so please bring a packed lunch and a drink, although it may well be that we will cook various treats over a campfire.

## Refunds

Should it ever become necessary for the Outdoor Learning team to cancel a booking owing to circumstances outside the control of the Outdoor Learning Manager, for example because of severe weather, you will receive a full refund.

If you cancel more than 14 days before the training then you will receive a full refund.

If you cancel less than 14 days before the training you will be offered an alternative date if possible, but you will not receive a refund.

## Variation of conditions

The Outdoor Learning team reserves the right to vary its booking conditions from time to time as necessary. Bookings will be subject to those conditions prevailing at the time of the issue of the booking form.



# Want to know more and how to book on a training course:

## Try a taster morning

We are not running taster mornings presently, however, please email [outreach@surreywt.org.uk](mailto:outreach@surreywt.org.uk) and we will arrange for you to chat with one of our Tutors

## Course training dates

All of our training courses are advertised in the **What's On** section of our website ([surreywildlifetrust.org](http://surreywildlifetrust.org)) under **Forest School & Teacher Training**.

## Enquiries & booking

For any enquiries, further information and to make a booking please email the outdoor learning team at [outreach@surreywt.org.uk](mailto:outreach@surreywt.org.uk) or call **01483 663300**

## Course location addresses

**Pucks Oak Barn:** The Street, Compton GU3 1EG

**Bay Pond Education Centre:** High Street, Godstone RH9 8LT

**Nower Wood Education Centre:** Mill Lane, Leatherhead KT22 8QA



# Booking Form

Please complete the following information and email this form to [outreach@surreywt.org.uk](mailto:outreach@surreywt.org.uk) along with your deposit payment to secure

<b>Student Name</b>		
<b>Organisation</b> (if applicable)		
<b>Training course</b>	Dates Level & location	
<b>Invoice address &amp; email</b>		
<b>Contact number</b>	Work	Mobile
<b>Student email</b>	Accounts email address	
<b>Signature of student &amp; date</b>	SIGNATURE ..... DATE ..... Electronic signatures accepted	
<b>Are you a member of Surrey Wildlife Trust</b>		
We will contact you about your application. If you would like to be contacted about conservation, fundraising, volunteering, news and other activities by email, please indicate below <b>Post</b> <input type="checkbox"/> <b>Email</b> <input type="checkbox"/> <b>Phone</b> <input type="checkbox"/>		
A deposit is required with this booking form to confirm a place on a course <ul style="list-style-type: none"> <li>We cannot guarantee a place until a deposit has been received</li> <li>You will be invoiced for the final balance a month before the start of the course, if you require an invoice for the deposit payment please email <a href="mailto:outreach@surreywt.org.uk">outreach@surreywt.org.uk</a></li> </ul>		
<b>Course fees</b>	<b>Forest School Level 3 Leader:</b> £950 <b>Forest School Level 2 Assistant:</b> £490 <b>Top-Up from Level 2 to Level 3:</b> £500 <b>Leader in Outdoor Learning:</b> £360 <b>INSET Training</b> - 1/2 day: £425 Full day: £725	
<b>Deposit required with booking form</b>	<b>Level 2:</b> £100 <b>Level 3 and Top-Up:</b> £200 <b>Leader in Outdoor Learning:</b> £100 <b>INSET Training:</b> £100 (deposit non-refundable if cancellation is made less than 14 days before the course starts)	
<b>Payment Details</b>	<b>BACS:</b> Bank of Scotland 80-11-00 Account no. 06053499 <b>Reference:</b> 'your name'	

## Your Privacy

- We will keep your data on our secure database and will use it to send you emails about conservation, events and other way to get involved with local wildlife.
- You can opt out of any communications at any time.
- We will never share your data with other organisations
- For further information on how we use your data, please refer to our privacy policy.