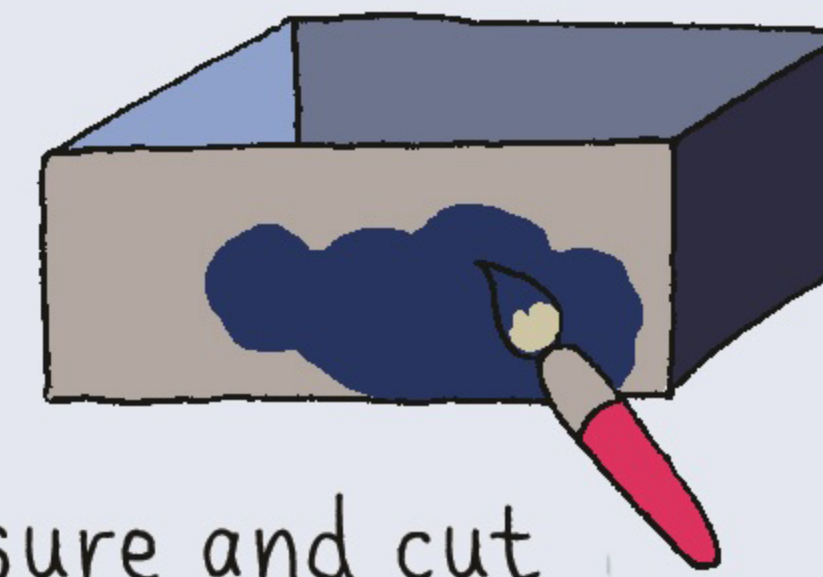


Make a nature treasure chest

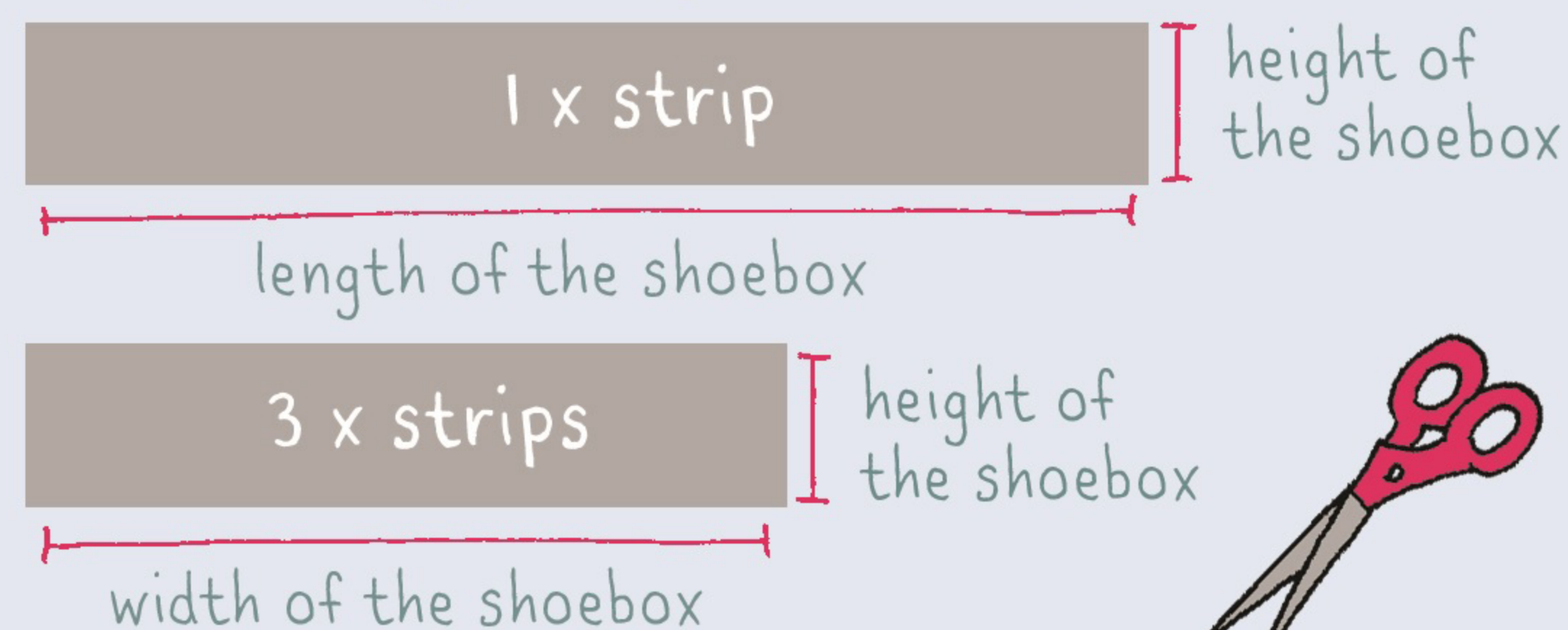
You will need

- A shoebox with a lid 
- Paint and paint brushes 
- Felt tips or marker pens 
- Decorations – such as silver foil, old sweet wrappers, old beads 
- Single and double-sided sticky tape 
- PVA glue 
- Scissors 
- Cardboard from old cereal packets 
- An adult – to help with the fiddly bits!

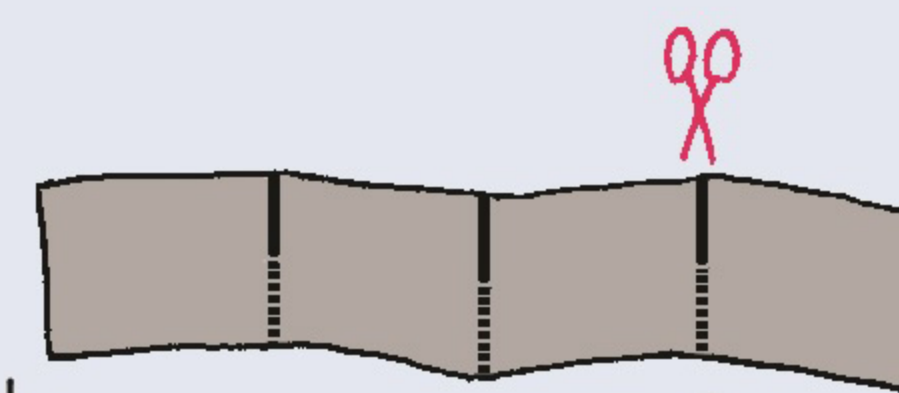
- 1 Paint your shoebox and lid inside and out, and leave this to dry.



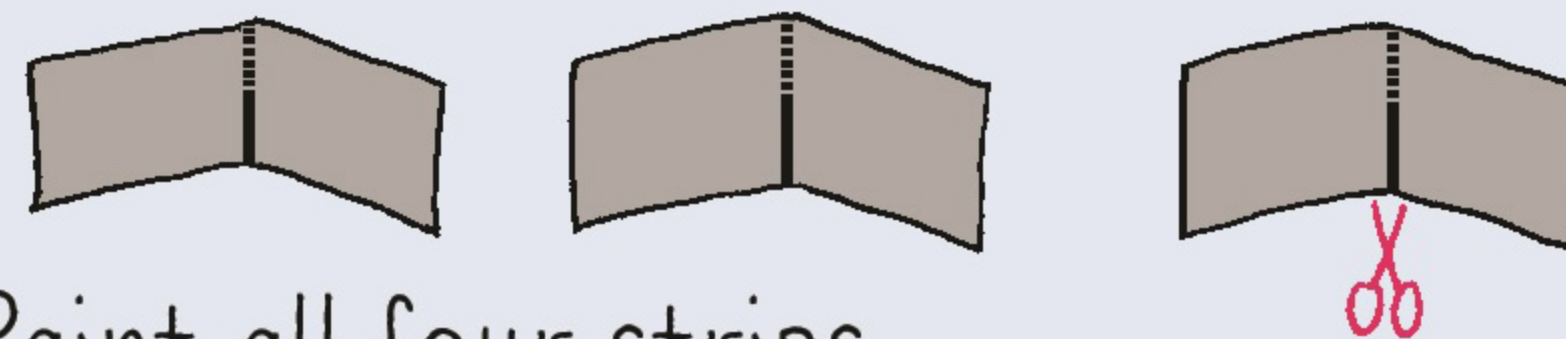
- 2 Make some dividers – measure and cut the following from your cereal packet:



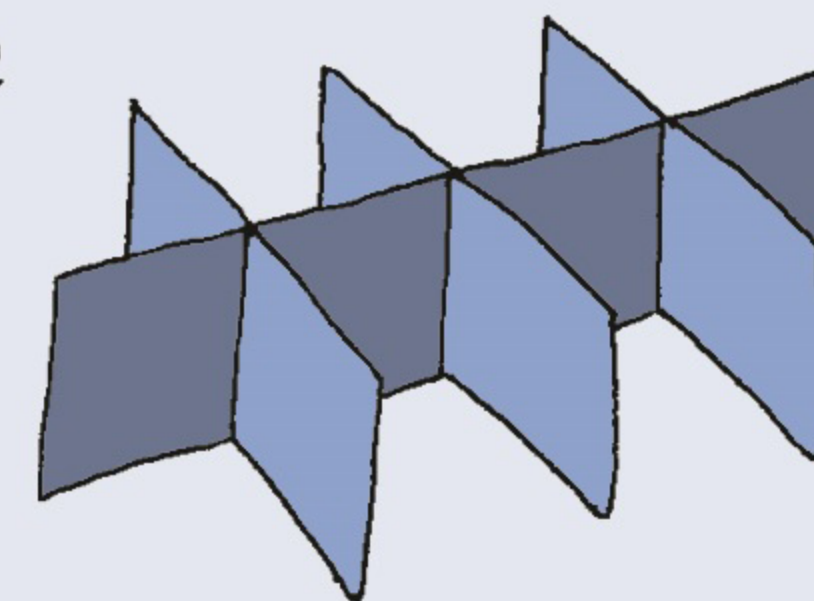
- 3 Fold the long strip in half, and then in half again. Open out and cut halfway up each fold.



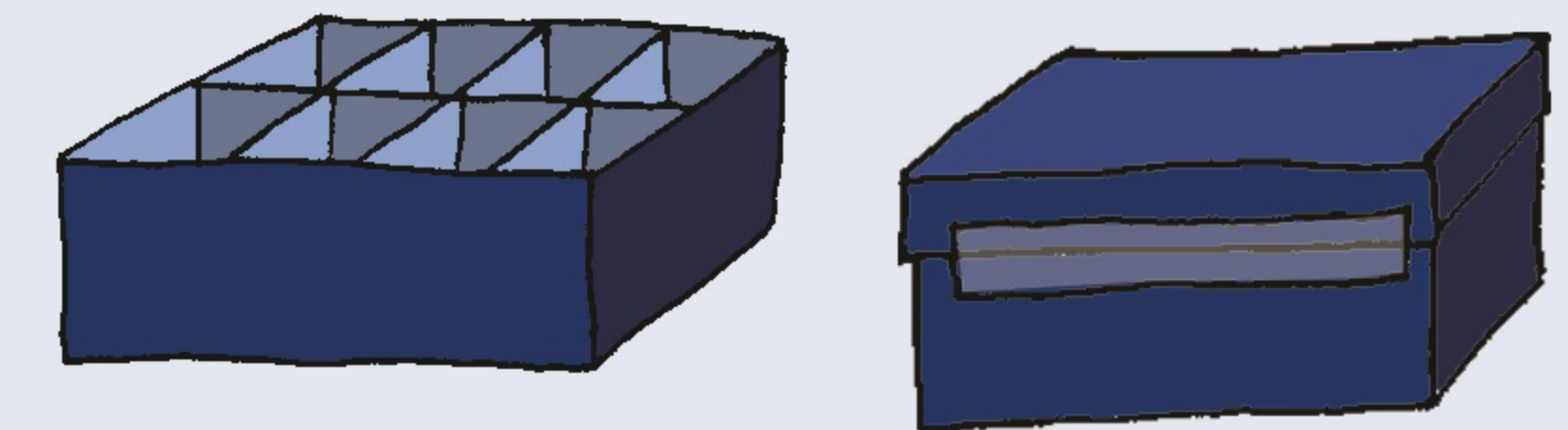
- 4 Fold the short strips in half. Open out and cut halfway up each fold.



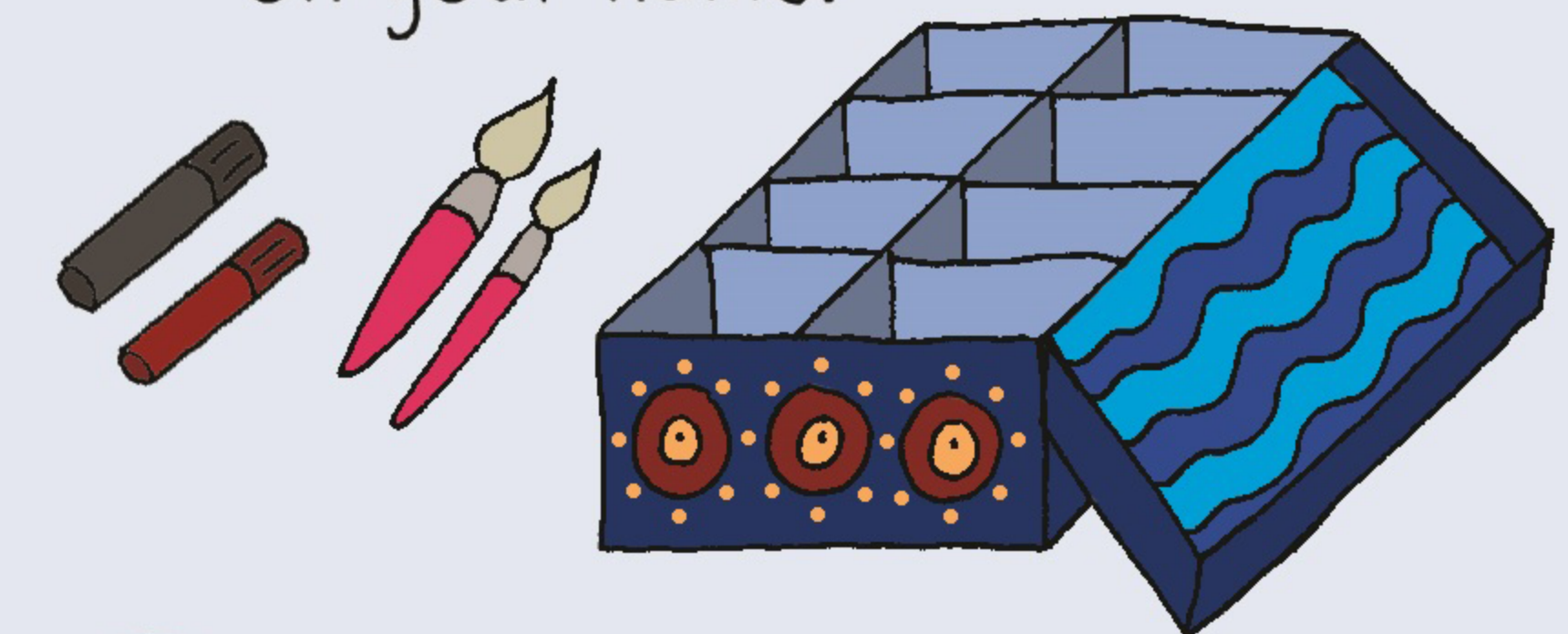
- 5 Paint all four strips then slot the three short strips into the cut folds of the long strip.



- 6 Place the dividers inside your treasure chest. Then put a wide strip of tape along the back of the lid to make a hinge.



- 7 Stick your decorations onto the treasure chest. You could even label the sections or paint on your name.



- 8 Go on an adventure walk to find some natural treasures – think of themes such as items which begin with S, or different objects which are soft, prickly, rough, smooth, shiny, red or smelly!

