



# A Guide to Forest School Training

Course Information 2018/19







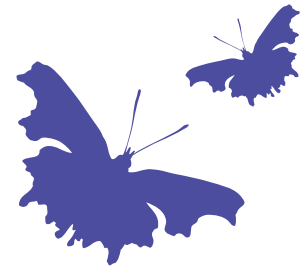
## What is Forest School?

**Forest School is a unique outdoor education programme run by qualified leaders. It gives children and young people the chance to explore, learn and discover at their own pace, developing their confidence and self-esteem in a safe and supportive space.**

Forest School is different from most other forms of 'environmental education' in that it involves regular sessions in the same woods and the activities are mainly determined by the children and are predominately play based.

The skillful Forest School leader will use the children's own interests to extend their knowledge and skills, thereby increasing the next generation's appreciation and care of the natural world.

The ethos is shared by thousands of trained practitioners across the UK and beyond. It's roots reach back to early years pioneers in outdoor learning and across the sea to Scandinavia.



## Why choose Surrey Wildlife Trust?

**Promoting the reconnection between people and their natural environment is at the heart of Surrey Wildlife Trust's Forest School ethos, and this is reflected in all areas of our courses.**

We recognise the vital importance of promoting an understanding of the natural world and see the Forest School training programme as an ideal medium for delivery.

As the only local charity that is concerned solely with the conservation of all forms of wildlife, we have expertise in biodiversity protection, botanical surveys and habitat management plans. Being a local training provider, we are often able to support new leaders on a personal level throughout their training and in the establishment of their own Forest Schools.

We offer additional support in terms of free resources, regular mentoring sessions for students and onsite visits & observations.

Our trainers are experienced providers of environmental education, and have been delivering Forest School programmes to children in Surrey from schools, nurseries, youth and community groups for many years.

We are active members of the Forest School Association (FSA) and the local Surrey group.

The Awarding body for our training courses is Open College Network West Midlands.

In addition to Level 2 & 3 courses, we provide a comprehensive CPD programme to support Forest School practitioners, which covers everything from First Aid to Tree Identification.



It covered all areas that were appropriate and relevant.  
It had the right amount of practical and theory,  
considering all areas of learning.

Forest School Training Level 3 Student



# Which level of training should I choose?

There are different levels of training in Forest School and we provide the following courses:

Level 2	Course description	Price
Level 2 is designed to qualify the learner to become a Forest School Assistant, enabling them to take a proactive role in helping a Forest School Leader plan and deliver a Forest School programme and supporting the learners.	<p><b>4 day training course covering the OCNWM units.</b></p> <p><b>This includes:</b></p> <ul style="list-style-type: none"> <li>• Planning for and running your forest school</li> <li>• Risk assessment, background to forest schools.</li> <li>• Practical skills and woodland management including fire lighting, tool use, games, identification and use of woodland resources.</li> <li>• Assistance with completing your portfolio and marking.</li> </ul> <p><b>Awarding Body:</b> Open College Network West Midlands</p>	£475

Level 3 Top Up	Price
Our top up course is designed for those who already have a Level 2 qualification with Open College Network West Midlands and wish to gain the Level 3 certificate. This course is incorporated within our existing Level 3 qualification, but with less guided tuition and a reduced cost. Please contact us for further information or if you have a Level 2 qualification with another provider.	£500

Level 3	Course description	Price
<p>Level 3 is designed to qualify the learner to become a Forest School Leader, able to set up and run a Forest School programme. Level 3 covers how to facilitate groups in a learner-centred way, and how to manage a Forest School site sustainably. It also covers the practical skills required of a Forest School practitioner.</p> <p>You do not need to have a Level 2 in order to complete Level 3.</p>	<p><b>5 day training course covering the five OCN units.</b></p> <p><b>This includes:</b></p> <ul style="list-style-type: none"> <li>• Planning for and running your forest school; policies and procedures, risk assessment, session planning.</li> <li>• Theories of learning and development and background to forest schools.</li> <li>• Practical skills and woodland management including fire lighting, tool use, games, identification and use of woodland resources.</li> <li>• Mentoring sessions – a face to face opportunity to ask questions and receive advice on your portfolio work.</li> <li>• Two skills days assessing and consolidating skills.</li> <li>• Portfolio advice and assessment.</li> </ul> <p><b>Awarding Body:</b> Open College Network West Midlands</p>	£900

**Not sure what to expect? Why not attend one of our taster mornings.**

See page 6 for details

## Taster sessions and further training events

We provide half or full day taster sessions for individuals and INSET training for schools to introduce the theory and practice of Forest Schools. We also offer follow up training and support, running sessions in schools and advice on improving your site. For further information please contact [outreach@surreywt.org.uk](mailto:outreach@surreywt.org.uk)

# Course requirements

## Level 2 Award for Forest School Assistants

- Participants should be over 18 years old and have some experience of working with young people or adults, for example youth workers, teachers or teaching assistants.
- All participants must be DBS checked.
- Participants must be able to assist with 3 forest school sessions.
- Commitments (approx 60 hours)
- 4 days initial theory and practice.
- Assisting with planning and delivery of 3 forest school sessions.
- Completion of a booklet of evidence.

**The course normally takes participants six months to complete although some have handed all the coursework in after a few months. It can take several months for the work to be marked and for the exam board to validate it and send certificates out.**

## Level 3 Certificate for Forest School Leaders

- The minimum age for this qualification is 19 and participants must have significant experience of working with young people or adults, for example youth workers, teachers or teaching assistants. The minimum age for a qualified Forest School leader is 21. This is a Forest School Association and Department of Education requirement.
- All participants must be DBS checked
- Be able to deliver a six session forest school programme to a target client group
- When leading a Forest School you need a first aid qualification; this can be either First Aid at Work (3 days) or First Aid in the Outdoors (2 days). Due to the outdoor nature of the work the outdoor first aid qualification is recommended, especially if forest school sessions take place in remote locations. We regularly run First Aid courses as part of our CPD for Forest School practitioners, for more information email [adult.learning@surreywt.org.uk](mailto:adult.learning@surreywt.org.uk)
- Commitments (approx (180 hours)
- 5 days initial theory and practice
- 2 days skills weekend
- 1 assessment visit in your setting
- Completed portfolio of written tasks
- Optional mentoring days
- Setting up and running 6 forest school sessions
- About six months through the Level 3 course we will bring you back for a weekend to further assess and extend your skills, in particular cooking over a fire and shelter building. It is also a great chance to discuss challenges and share tips. Depending on the time of year you may have the opportunity to camp overnight in the woods.

**The course normally takes participants a year to complete, although some have handed all the coursework in after a few months. It can take several months for the work to be marked and for the exam board to validate it and send certificates out.**

## Bookings and Admin:

**Victoria Pinder**

**Direct Tel: 01483 663300**

**Email: [outreach@surreywt.org.uk](mailto:outreach@surreywt.org.uk)**

**website: [surreywildlifetrust.org/forestschool](http://surreywildlifetrust.org/forestschool)**



## What I need for the course?

You will need a full set of outdoor waterproof clothing and a pair of suitable boots, the majority of the course is spent outside whatever the weather. Further items like a camera/phone is advisable to take pictures for your portfolio. You will be sent full joining instructions when you have booked a place.

You need to arrange a woodland site and a client group to deliver your 'Introduction to Forest School' programme (min 6 sessions); it is not vital to have this prepared before the course, but it will help give context to your learning if you can picture your woodland and know a bit about your learners. Do bear in mind that the Forest School Association guidelines for quality provision are that each session is at least 2 hours long.

## How do I book a place?

Please complete the booking form included in this guide and return to us with a deposit to secure your place on a course. We will then invoice you for the remaining balance a month before the course starts. Payment must be made before the start of the course. See our booking conditions included in this guide.

## Tailored courses

SWT can offer and has in the past provided tailored Forest School courses at an individual settings or schools if there are sufficient numbers of staff (six plus) wanting to attend. This is a great training opportunity as it enables you to have a course delivered that is specifically tailored to your site and the children or young people you work with. For further information and the cost contact [outreach@surreywt.org.uk](mailto:outreach@surreywt.org.uk)

## Adult courses booking conditions

### Safety and first aid

All training activities run by the Surrey Wildlife Trust are run with safety as a priority, and the Outdoor Learning Officer is First Aid trained. There will be safety instructions where necessary as part of the session, which we expect all participants to follow. Please inform the bookings administrator of any dietary requirements or medication taken. Please bring any medication needed and make the course leader aware of where it is.

## Clothing and Equipment

All participants should be adequately prepared for the outdoors. Clothing should be suitable for getting muddy/torn.

**Winter:** warm clothes and waterproofs.

**Summer:** hats, suncream and plenty of water should be brought; waterproofs if it looks like it may rain.

We recommend long trousers and long sleeved tops, even in the summer, to help prevent bites, scratches and ticks. Insect repellent may be applied if wished.

Footwear should be sturdy trainers or boots to reduce the likelihood of slips, trips and falls.

## Inclement weather

Our training will run unless the weather is so bad it would be dangerous to do so. Some of the sites we use have access to a building if necessary and have toilets available.

## Refreshments

The Forest School training lasts all day, so please bring a packed lunch and a drink, although it may well be that we will cook various treats over a campfire.

## Refunds

Should it ever become necessary for the Outdoor Learning team to cancel a booking owing to circumstances outside the control of the Outdoor Learning Manager, for example because of severe weather, you will receive a full refund.

If you cancel more than 14 days before the training then you will receive a full refund.

If you cancel less than 14 days before the training you will be offered an alternative date if possible, but you will not receive a refund.

## Variation of conditions

The Outdoor Learning team reserves the right to vary its booking conditions from time to time as necessary. Bookings will be subject to those conditions prevailing at the time of the issue of the booking form.



# Forest School Training dates:

The following Level 2, Level 3 Top Up, Level 3 and Taster sessions are currently available:

## Forest School taster morning

**Friday 9th November 2018 at Nower Wood, Leatherhead 9.30am - 12.30pm**

Price: £26

**Saturday 16th February 2019 at Pucks Oak Barn, Compton 9.30am - 12.30pm**

Price: £26

## Level 2 Award for Forest School Assistants (4 days)

**Monday 1st & Tuesday 2nd October and Monday 29th & Tuesday 30th October 2018  
9.30am - 4.30pm at Pucks Oak Barn, The Street, Compton GU3 1EG**

## Level 3 Certificate for Forest School Leaders (5 days)

**Saturday 6th & Sunday 7th October and Saturday 3rd, Sunday 4th, Monday 5th  
November 2018 9.30am - 4.30pm at Nower Wood, Mill Way, Leatherhead KT22 8QA**

Followed by a skills weekend on 18th & 19th May 2019 at Pond Farm, Wisley Common

**Monday 4th & Tuesday 5th March, Monday 1st April and Monday 13th & Tuesday 14th May  
2019 9.30am - 4.30pm at Nower Wood, Mill Way, Leatherhead KT22 8QA**

Followed by a skills weekend in September 2019 (dates & location TBC)



# Forest School Training Booking Form

Please complete the following information and return with your deposit payment to secure your booking to outreach@surreywt.org.uk or by post: Victoria Pinder, Forest School Administrator, Surrey Wildlife Trust, School Lane, Pirbright, Surrey GU24 0JN

<b>Student Name</b>		
<b>Organisation</b> (if applicable)		
<b>Forest School training course</b>	Dates	
	Level & location	
<b>Invoice address &amp; email</b>		
<b>Contact number</b>	Work	Mobile
<b>Student email</b>	Accounts email address	
<b>Signature of student &amp; date</b>	SIGNATURE ..... DATE ..... Electronic signatures accepted	
<b>Are you a member of Surrey Wildlife Trust</b>		
<p>We will contact you about your application. If you would like to be contacted about conservation, fundraising, volunteering, news and other activities by email, please indicate below</p> <p><b>Post</b> <input type="checkbox"/></p> <p><b>Email</b> <input type="checkbox"/></p> <p><b>Phone</b> <input type="checkbox"/></p>		
<p>A deposit is required with this booking form to confirm a place on a course  <b>We cannot guarantee a place until a deposit has been received</b></p> <p><b>Payment Method</b> (please tick)      BACS <input type="checkbox"/>      Cheque <input type="checkbox"/></p> <p>You will be invoiced for the final balance a month before the start of the course</p>		
<b>Course fees</b>	<b>Forest School Level 3 Leader Training Course:</b> £900 <b>Forest School Level 2 Assistant Training Course:</b> £475 <b>Top-Up from Level 2 to Level 3:</b> £500	
<b>Deposit required with booking form</b>	<b>Level 2:</b> £100 <b>Level 3 and Top-Up:</b> £200 (deposit non-refundable if cancellation is made less than 14 days before the course starts)	
<b>Payment Details</b>	<b>Cheques</b> made payable to 'Surrey Wildlife Trust' <b>BACS:</b> Bank of Scotland 80-11-00 Account no. 06053499 <b>Reference:</b> 'your name'	

### Your Privacy

- We will keep your data on our secure database and will use it to send you emails about conservation, events and other way to get involved with local wildlife.
- You can opt out of any communications at any time.
- We will never share your data with other organisations
- For further information on how we use your data, please refer to our privacy policy.