



ABOUT US

As consultant ecologists, our job is to balance developers' objectives with stewardship of the environment. In doing so, we aim to improve the overall quality of life for local communities.

These priorities may sometimes seem to be at odds, but we relish the challenge of reconciling them and see each project as an opportunity to achieve the best possible outcome for both parties. Through open communication and pragmatic solutions, we add substantial value right across our clients' 'triple bottom line'; benefiting people, planet and prosperity.

SWT Ecology Services is a wholly owned subsidiary of Surrey Wildlife Trust and has operated for over 20 years. Our clients include local planning authorities, Surrey County Council, local and national developers, multi-disciplinaries and private homeowners.

SKILLS AND ACHIEVEMENTS

Our experienced ecologists help clients to navigate the ecological elements of the planning process, preparing ecological reports to support planning applications and habitat and species management plans; and site monitoring. Our ecologists are members of the Chartered Institute of Ecology and Environmental Management (CIEEM) and hold Construction Skills Certification Scheme (CSCS) cards. We will soon be ISO 9001 and ISO 14001 accredited, adhering to a high standard of project and environmental management and improvement.



SECTORS

- + Housing development
- + Road and rail infrastructure
- + Habitat management

OUR CLIENTS INCLUDE:

Surrey County Council,
Guildford Borough Council,
McCarthy & Stone, National
Trust, AECOM, Toyota (GB) and
Willmott Dixon



SWT Ecology Services' pragmatic advice has been much appreciated and their recommendations not onerous for us to fulfil. This has been invaluable for us to deliver our portfolio of projects!

Peter Walsh, Senior Development Manager, McCarthy & Stone

OUR SERVICES

MANAGEMENT

Our managing director, Gabrielle Graham, has a long career in ecology, working on large-scale projects involving infrastructure, renewable energy and housing development. She is a Chartered Ecologist, holds a Level 2 Bat Class Survey licence and has been the named ecologist on a mitigation licence. Gabrielle has undertaken numerous Ecological Impact Assessments to inform Environmental Statements, and has completed Habitat Regulations Assessment for sites within the Thames Basin Heaths SPA and SAC

Gabrielle is supported by an experienced team with specialisms including botanical surveys (Phase 1 and Phase 2), protected species surveys, habitat management plans, Local Wildlife Site surveys (also known as Sites of Nature Conservation Importance), Biodiversity Benchmarking and BREEAM assessments.

We manage our projects proactively, and promote open communication with our clients. By identifying ecological constraints at an early stage of a project, our project managers discuss management and mitigation options with our clients to identify the optimal solution for them and the environment.

The team holds the necessary licences required to undertake protected species surveys and can be named ecologists on mitigation licences, surveys, protected species surveys, habitat management plans, Local Wildlife Site (Sites of Nature Conservation Importance) surveys and Biodiversity Benchmarking.

SERVICE LIST

+ INITIAL ASSESSMENTS

Preliminary Ecological Appraisal, walkover surveys, desk studies

SPECIES AND HABITAT-SPECIFIC SURVEYS

Mammal surveys (bats, badger, otter, water vole, hazel dormouse), bird surveys (breeding bird, barn owl), vegetation surveys (hedgerow, species-specific and National Vegetation Classification surveys), Invertebrate (terrestrial, aquatic and white-clawed crayfish), amphibian surveys (great crested newt), reptile surveys (common lizard, adder, grass snake, smooth snake, sand lizard, slow worm)

+ BREEAM

Assessments and management plans

IMPACT ASSESSMENTS

+ Ecological Impact Assessment, Ecology chapter of Environmental Statement, Habitat Regulations Assessment

+ MITIGATION LICENCE APPLICATIONS

Bats, great crested newt, Roman snail, hazel dormouse, rare reptiles

+ BIODIVERSITY BENCHMARK

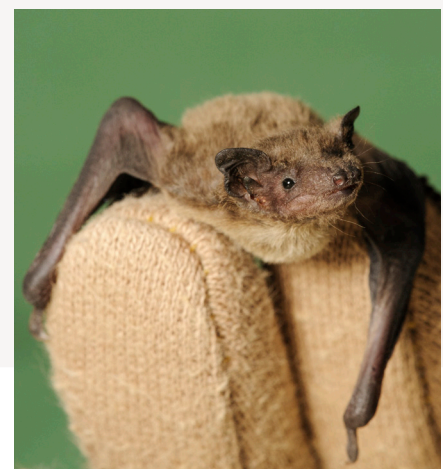
Auditing and pre-application advice

HABITAT & SPECIES ASSESSMENT & MANAGEMENT ADVICE

+ Sites of Nature Conservation Importance (SNCI), Management Plans for sites, habitats and species-specific

+ ADVICE FOR INDIVIDUALS, LANDOWNERS & BUSINESSES

Including managing habitats and ecological enhancements



GET IN TOUCH

We're always happy to answer questions or discuss potential projects, so please get in touch.

01483 795465 | ecologyservices@surreywt.org.uk | swtecollogyservices.co.uk

CASE STUDIES

NOWER WOOD EDUCATION CENTRE

Client: Surrey Wildlife Trust

Surrey Wildlife Trust's flagship education centre was rebuilt in 2016-2017, following a successful fundraising campaign. In order to inform the planning application, SWT Ecology Services was commissioned to undertake a Preliminary Ecological Appraisal, great crested newt surveys (including Habitat Suitability Index survey, presence/absence surveys and population size class assessment); presence/absence surveys for hazel dormouse; and bat surveys. Mitigation licences for great crested newt and hazel dormouse were required.

SWT Ecology Services collected all of the baseline information within the specified timeframes to inform the reports submitted with the planning application. We worked in close collaboration with the design team to create new ponds as part of the great crested newt mitigation and managed the hazel dormouse and great crested newt survey licences. Recommended mitigation was pragmatic and complemented the educational needs of the reserve.

The centre is now welcoming groups of adults and children to further their knowledge in all things ecological.

ECO-HEADQUARTERS

Client: Toyota (GB)

As part of Toyota GB's commitment to reducing its impact on the environment, SWT Ecology Services was commissioned to support the team in transforming their headquarters into Eco-Headquarters, by increasing biodiversity, engaging staff and the local community and creating a permanent educational resource. We completed baseline ecological surveys to understand what biodiversity was present, prepared a five year management plan and identified Key Performance Indicators (KPIs) to measure ecological success and support Toyota GB in their goal of being

awarded The Wildlife Trusts' Biodiversity Benchmark.

The aim of the project was to ensure long-term benefits to local biodiversity and promote environmental education for staff, their families and the local community.

Our experienced ecologists supported Toyota GB during the design phase of the wildlife gardens and helped engage staff by leading practical conservation days and education sessions. We completed our surveys in the appropriate season and produced technical reports.

REIGATE HEATH HABITAT MANAGEMENT PLAN

Client: Reigate & Banstead Borough Council

Reigate Heath is a Site of Special Scientific Interest (SSSI) and a Local Nature Reserve (LNR). It is an important example of the lowland heath habitat, including heather and acid grassland. It is also an important archaeological site with some features still visible today. The aim of the project was to develop an up-to-date management plan to ensure there is a continuity and stability of approach to site management such that work can be effectively programmed and recorded.

SWT Ecology Services delivered the client brief, creating a 10 year management plan to maintain the current distribution of acid grassland, heathland and woodland and developing a work programme that could be inputted into a Conservation Management System software.

SWT Ecology Services also liaised with the various stakeholders to ensure their objectives and expectations were met. Where these were conflicting, SWT Ecology Services negotiated the best approach, whilst ensuring the sustainable management of Reigate Heath.



VARIOUS HOUSING DEVELOPMENTS

Client: McCarthy & Stone

McCarthy & Stone has been working with SWT Ecology Services on a number of housing development projects that require the demolition of buildings. Given bats and their roosts are protected under UK legislation, these buildings were assessed for their potential to support a bat roost, in addition to identifying and managing other ecological constraints.

SWT Ecology Services undertook the Preliminary Ecological Appraisal and Bat Preliminary Roost Assessment simultaneously where the opportunity arose to maximise project efficiency. Where projects were commissioned towards the end of the survey season, SWT Ecology Services used their professional judgement to ensure surveys were undertaken in suitable weather conditions.

Planning applications, supported by SWT Ecology Services technical reports have been successfully lodged.

ECOLOGY SURVEYS TO INFORM STOKE PARK MASTERPLAN

Client: Guildford Borough Council

Guildford Borough Council has undergone a consultation period and commissioned ecological surveys to inform the Stoke Park masterplan to create a community park and visitor destination. Surveys included breeding bird, invertebrate, National Vegetation Classification Surveys, Phase 1 habitat survey and a bat survey. Surveys were completed within the 2017 survey season and areas of high ecological value were identified.

CREATING A SUSTAINABLE ACCESSIBLE NATURAL GREEN SPACE (SANG)

Client: Runnymede Borough Council

Runnymede Borough Council is proposing Chertsey Meads to Natural England as a potential Suitable Accessible Natural Green Space (SANGS). The aim of the SANGS is to attract public use for dog walking and recreation away from ecologically sensitive sites, such as the Thames Basin Heaths Special Protection Area (SPA). The aim of the project was therefore to undertake an assessment of Chertsey Meads,

including Phase 1 habitat survey, and determine opportunities and constraints to create a SANGS.

SWT Ecology Services completed the access statement and constraints analysis of creating a SANGS at Chertsey Meads. The study also included assessing the site against the Natural England SANGS Site Checklist; and the management plan prepared by SWT Ecology Service in 2016. The site was found to be a suitable candidate and further recommendations were made with regards to the management to further enhance its suitability as a SANGS.

Runnymede Borough Council provided positive feedback on the assessment and put forward the recommendation to Natural England.



GET IN TOUCH

We're always happy to answer questions or discuss potential projects, so please get in touch.

01483 795465 | ecologyservices@surreywt.org.uk | swtecologyservices.co.uk